

Chateau Meddybemps®

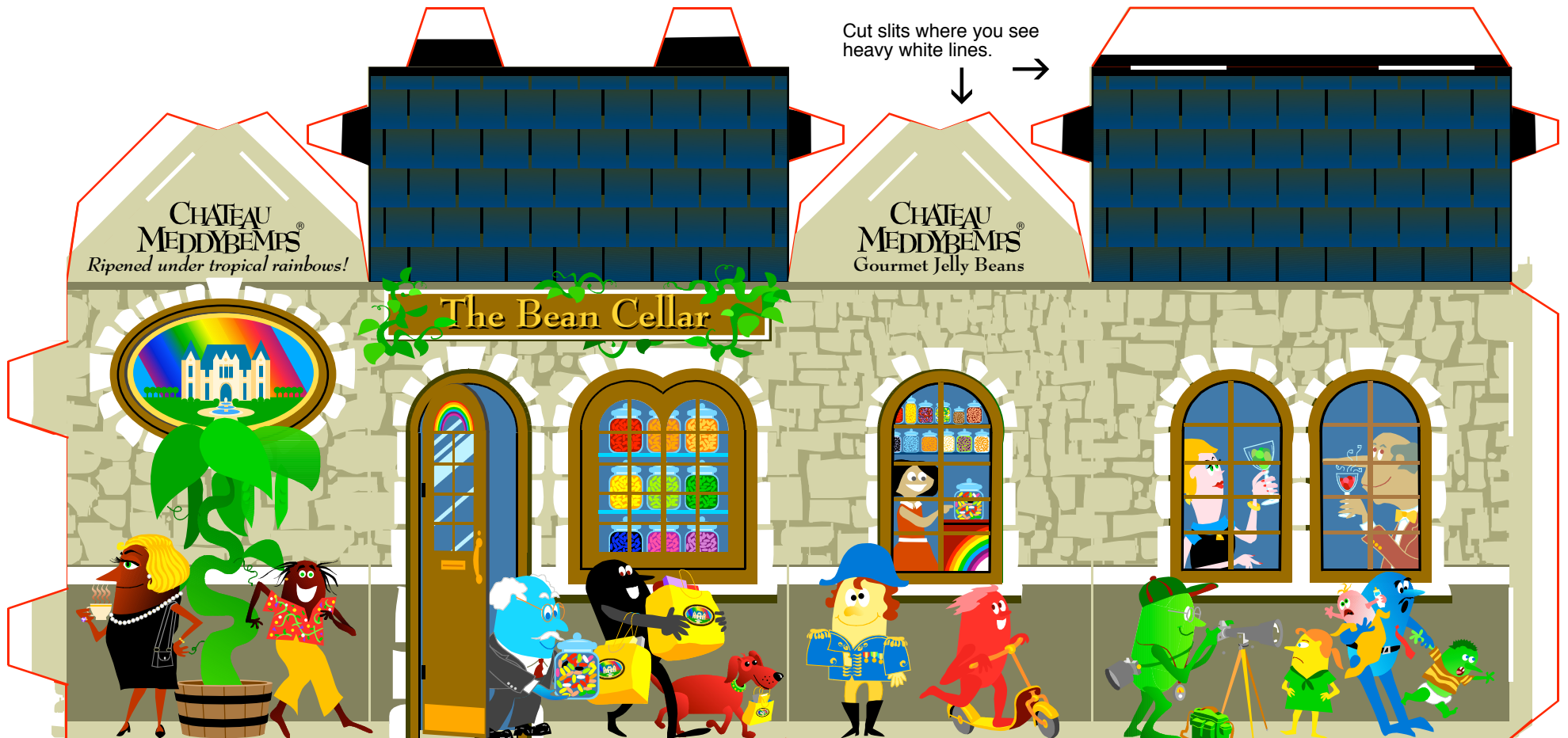
Meddybemps Miniature Village™

Bean Cellar

To assemble:

- Cut the building from this sheet with scissors. Cut slits carefully with hobby knife.
- Fold and gently crease tabs, corners of building, roof panels and bottom flaps.
- Slip tabs into slots. Save bottom flaps until last.
- Fold bottom flaps under in numerical order. Flap 4 is last and should tuck under Flap 1 to hold them all in place. Use glue or tape for permanent assembly.

For more ideas and inspiration, visit www.meddybemps.com/trains/village.html.



Cut slits where you see heavy white lines.



2

Meddybemps Miniature Village
Bean Cellar
© 2016 Jerry Jindrich.
All rights reserved.

1

3

www.meddybemps.com/trains

4