

Meddybemps Miniature Village™ from Chateau Meddybemps®

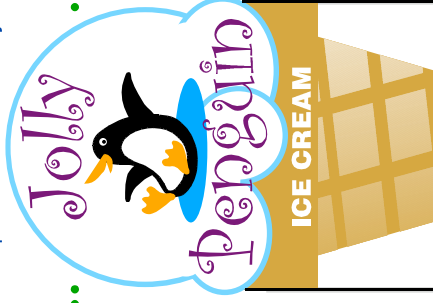
# Jolly Penguin Ice Cream Stand

**To assemble:**

- Cut the building from this sheet with scissors. Cut slits carefully with hobby knife.
- Fold and gently crease tabs, corners of building, roof panels and bottom flaps.
- Slip tabs into slots. Save bottom flaps until last.
- Fold bottom flaps under in numerical order. Flap 4 is last and should tuck under Flap 1 to hold them all in place. Use glue or tape for permanent assembly.

For more ideas and inspiration, visit

[www.meddybemps.com/trains/village.html](http://www.meddybemps.com/trains/village.html).



Cut out along black outline.

Cut slits for tabs where you see heavy black lines.

Cut out along heavy blue outline around top and sides of sign. Slide through slit where roof meets awning.

Meddybemps Miniature Village  
Jolly Penguin Ice Cream Stand  
© 2007, 2015 Jerry Jindrich.