

Meddybemps Miniature Village™

Outa Gas Station

For best results:

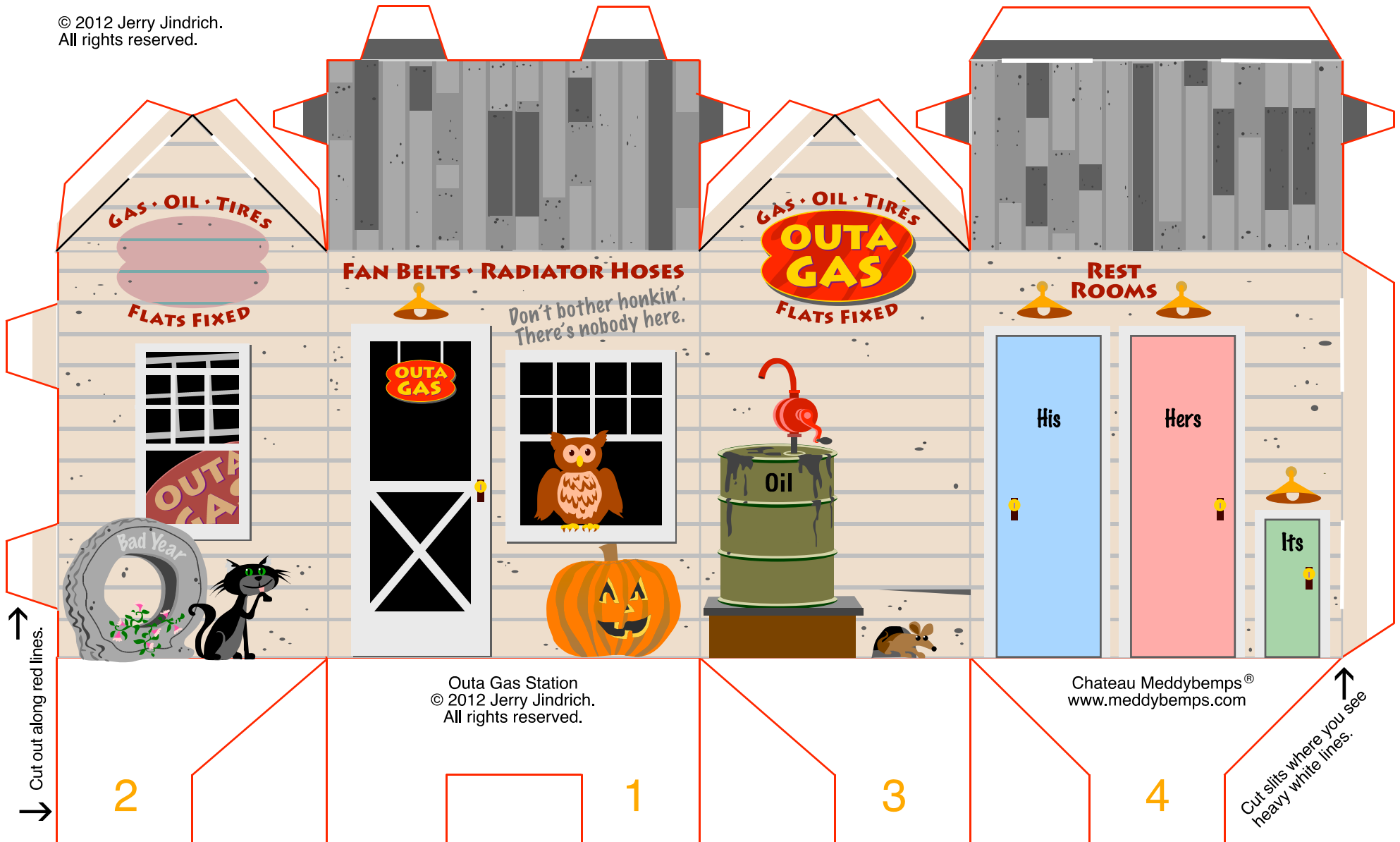
- Print first on 20-24 lb plain paper to practice cutting and folding this structure.
- Print final with good quality ink jet printer on premium heavy weight (68lb) glossy photo paper.

To assemble:

- Remove the building from this sheet.
- Carefully cut slits in the thick white line segments.
- Fold and gently crease tabs, corners of building, roof panels and bottom flaps.
- Slip tabs into slits. Save bottom flaps until last.
- Fold bottom flaps under in numerical order. Flap 4 is last and should tuck under Flap 1 to hold them all in place. For permanent assembly, use glue or tape.

For more ideas and inspiration, visit www.meddybemps.com/Trains.

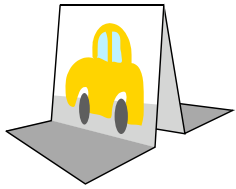
© 2012 Jerry Jindrich.
All rights reserved.



Meddybemps Miniature Village™

Outa Gas Station - 2

© 2012 Jerry Jindrich.
All rights reserved.



Cut out and fold picture in half. Spread base flaps out. Glue or tape the front and back together.

