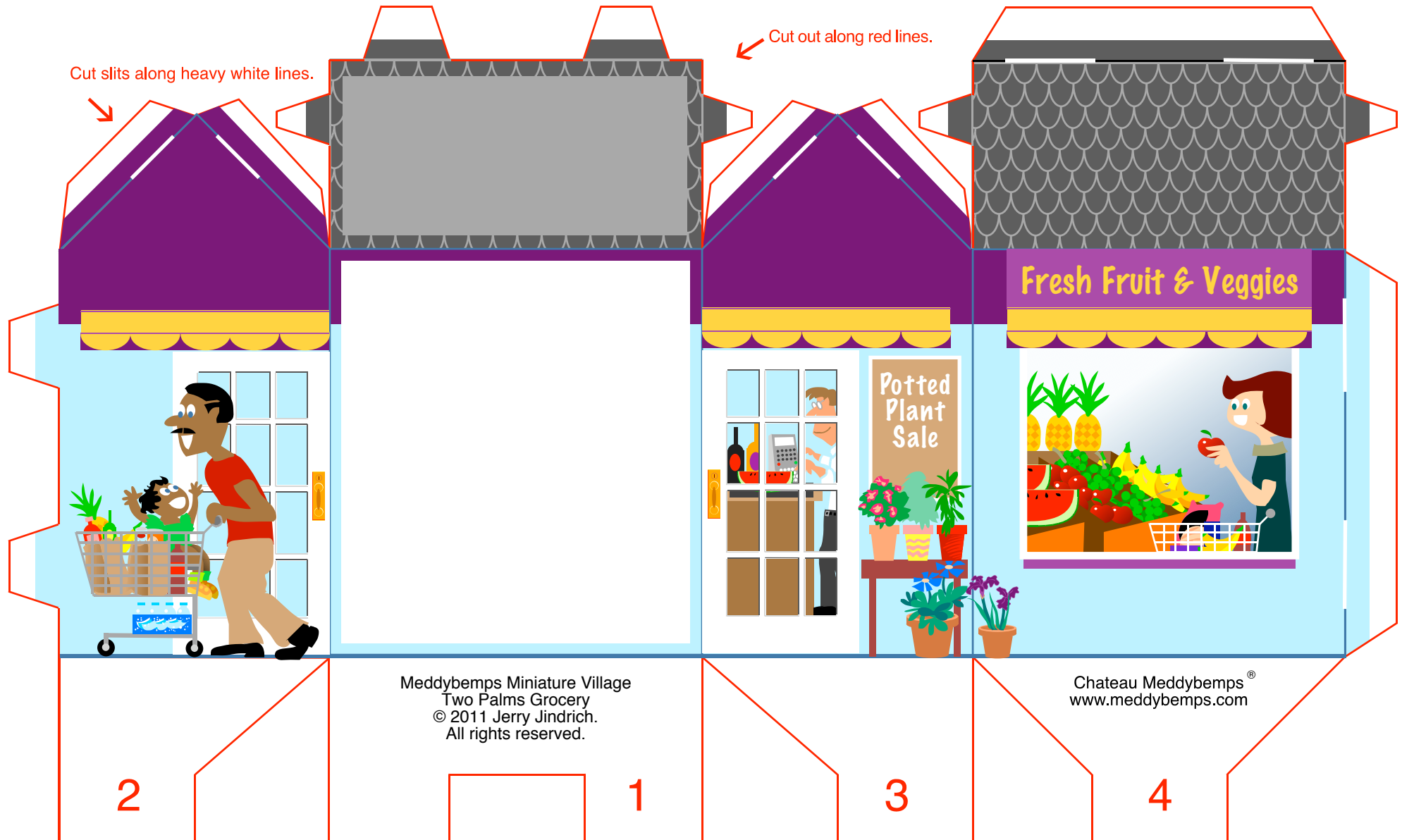


Two Palms Grocery - A

To assemble:

- Cut the building from this sheet with scissors. Cut slits carefully with hobby knife.
- Fold and gently crease tabs, corners of building, roof panels and bottom flaps.
- Slip tabs into slots. Save bottom flaps until last.
- Fold bottom flaps under in numerical order. Flap 4 is last and should tuck under Flap 1 to hold them all in place. Use glue or tape for permanent assembly.

For more ideas and inspiration, visit www.meddybemps.com/trains/village.html.

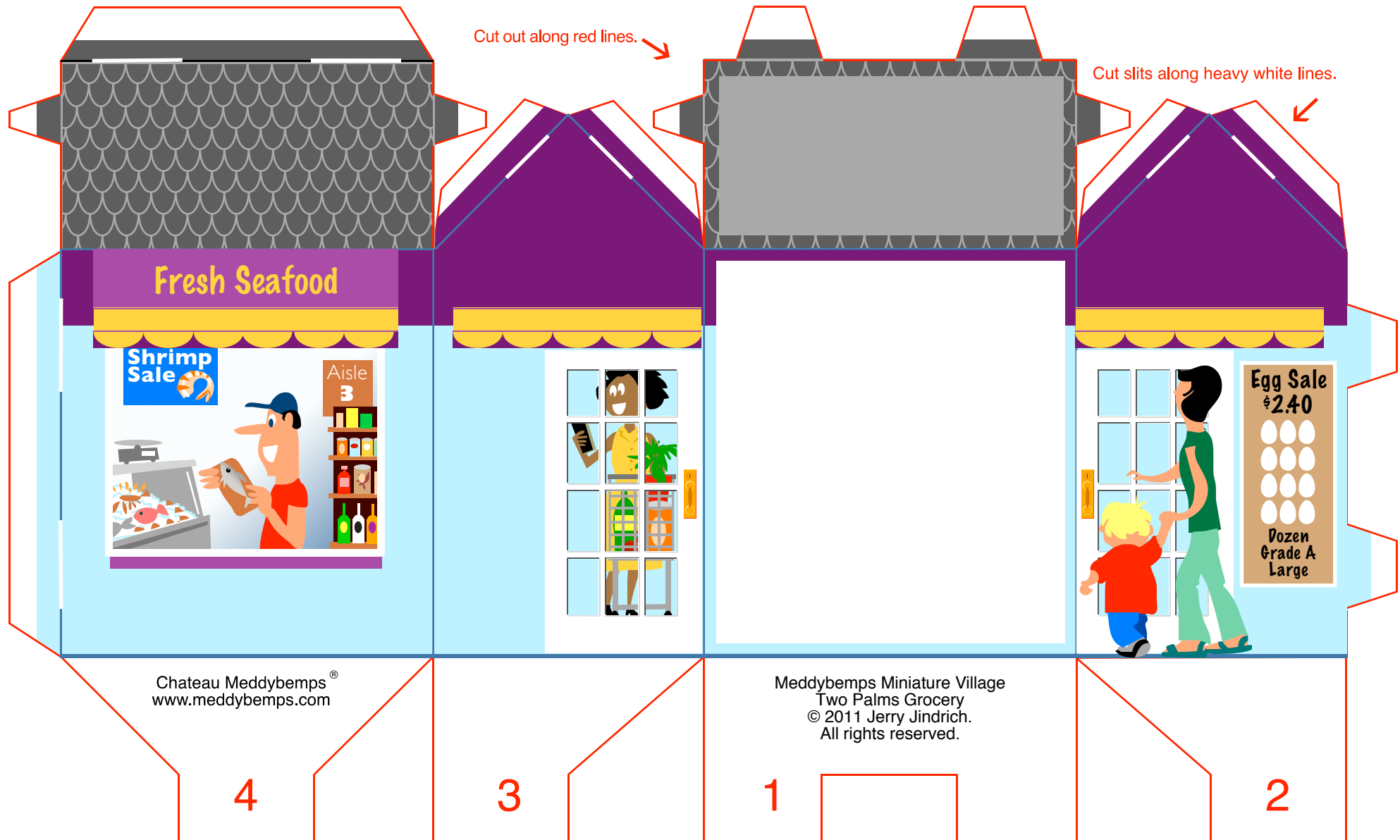


Two Palms Grocery - B

To assemble:

- Cut the building from this sheet with scissors. Cut slits carefully with hobby knife.
- Fold and gently crease tabs, corners of building, roof panels and bottom flaps.
- Slip tabs into slots. Save bottom flaps until last.
- Fold bottom flaps under in numerical order. Flap 4 is last and should tuck under Flap 1 to hold them all in place. Use glue or tape for permanent assembly.

For more ideas and inspiration, visit www.meddybemps.com/trains/village.html.



Two Palms Grocery - C

Hold the building bottoms together with a strip of tape. Then attach the new roof by sliding tabs into the slits in the peak of each roof. Fold the signs down and let them hang loosely.

