

Chateau Meddybemps™

Meddybemps Miniature Village™

# Pepper's Only Pizza

## To assemble:

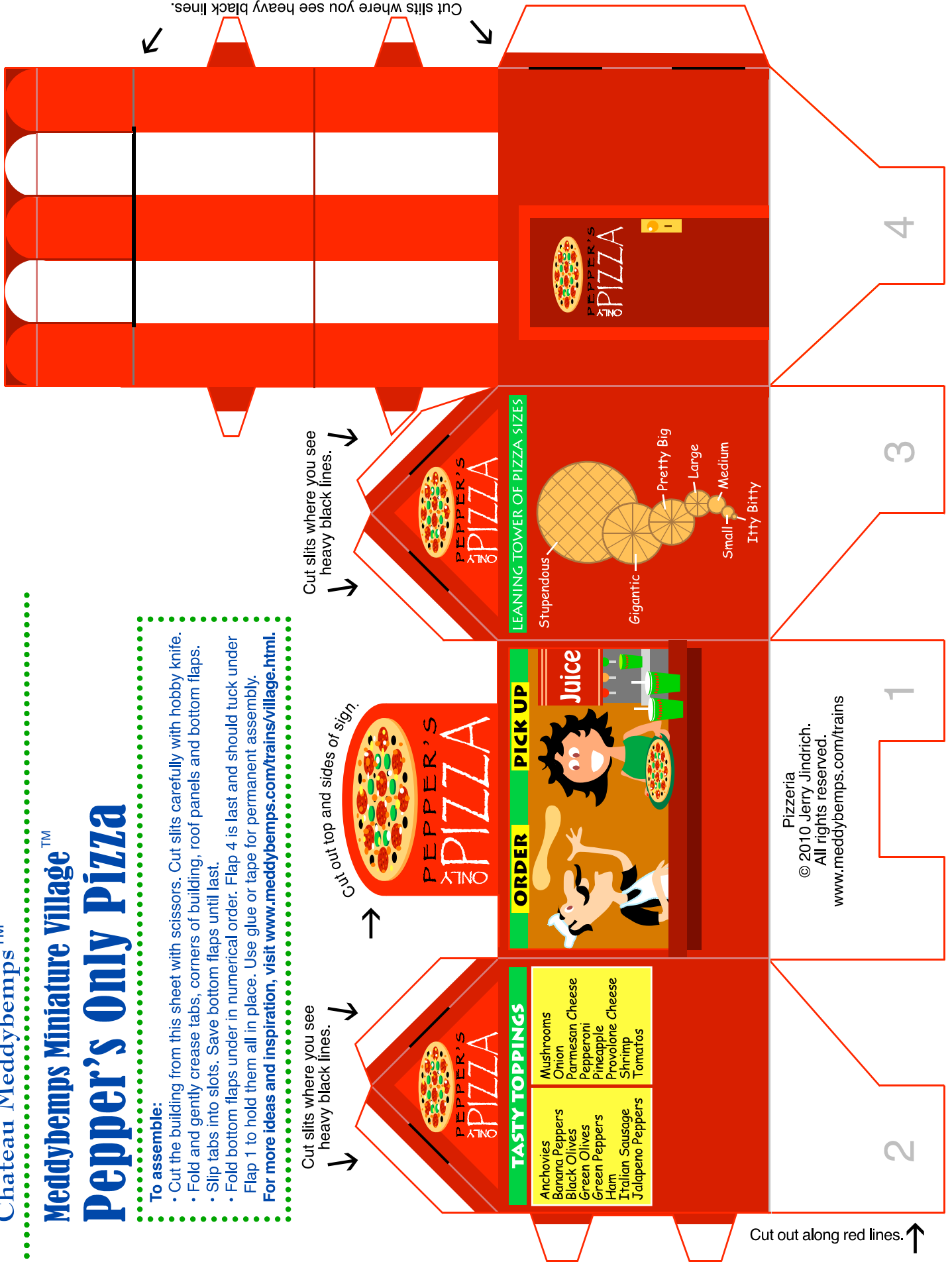
- Cut the building from this sheet with scissors. Cut slits carefully with hobby knife.
  - Fold and gently crease tabs, corners of building, roof panels and bottom flaps.
  - Slip tabs into slots. Save bottom flaps until last.
  - Fold bottom flaps under in numerical order. Flap 4 is last and should tuck under Flap 1 to hold them all in place. Use glue or tape for permanent assembly.
- For more ideas and inspiration, visit [www.meddybemps.com/trains/village.html](http://www.meddybemps.com/trains/village.html).**

Cut slits where you see heavy black lines.

Cut out top and sides of sign.

Cut slits where you see heavy black lines.

Optional: cut out along scallops.



Cut out along red lines. ↑

Pizzeria  
© 2010 Jerry Jindrich.  
All rights reserved.  
[www.meddybemps.com/trains](http://www.meddybemps.com/trains)

1

2

3

4